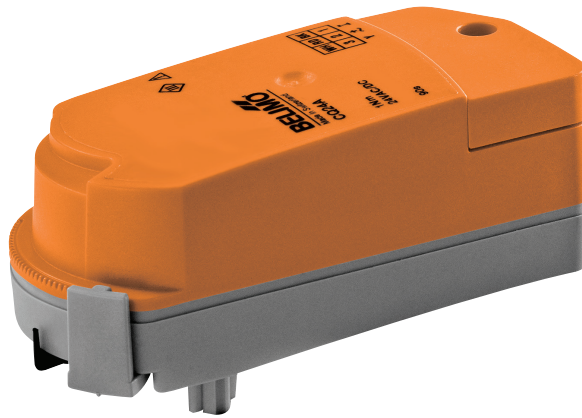


**Rotary actuator for zone valves**

- Nominal voltage AC 230 V
- Control Open-close, 3-point
- Snap-assembly of the actuator
- Flow setting variable


**Technical data**

<b>Electrical data</b>	Nominal voltage	AC 230 V
	Nominal voltage frequency	50/60 Hz
	Nominal voltage range	AC 207...253 V
	Power consumption in operation	1 W
	Power consumption in rest position	0.7 W
	Power consumption for wire sizing	2 VA
	Connection supply / control	Terminals 2.5 mm <sup>2</sup> (cable Ø 6.3...6.8 mm, 3-wire)
	Parallel operation	Yes (note the performance data)
<b>Functional data</b>	Torque motor	1 Nm
	Manual override	With actuator (clicked out) adjustable
	Actuating time	75 s / 90°
	Sound power level motor	35 dB(A)
	Position indication	Yes
	Flow setting	see product features
<b>Safety</b>	Protection class IEC/EN	II Protective insulated
	Degree of protection IEC/EN	IP40
	EMC	CE according to 2004/108/EC
	Certification IEC/EN	IEC/EN 60730-1 and IEC/EN 60730-2-14
	Mode of operation	Type 1
	Rated impulse voltage supply / control	2.5 kV
	Control pollution degree	3
	Ambient temperature	5...40 °C
	Non-operating temperature	-7...50 °C
	Ambient humidity	95% r.h., non-condensing
Maintenance	Maintenance-free	
<b>Weight</b>	Weight approx.	0.15 kg

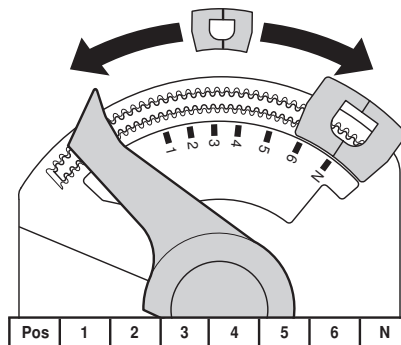
**Safety notes**


- This device has been designed for use in stationary heating, ventilation and air conditioning systems and must not be used outside the specified field of application, especially in aircraft or in any other airborne means of transport.
- Caution: Power supply voltage!
- Only authorised specialists may carry out installation. All applicable legal or institutional installation regulations must be complied during installation.
- The device may only be opened at the manufacturer's site. It does not contain any parts that can be replaced or repaired by the user.
- The device contains electrical and electronic components and must not be disposed of as household refuse. All locally valid regulations and requirements must be observed.

**Product features**

- Simple direct mounting** Tool-free snap assembly.  
The actuator can be plugged on the valve by hand (Caution! Just vertical movements). Pins must match the holes on the flange.  
The mounting orientation in relation to the valve can be selected in 180° increments. (Possible two times)
- Manual override** Click out the actuator and rotate the valve stem with the help of the actuator.
- High functional reliability** The actuator is overload protected, requires no limit switches in intermediate positions and automatically stops when the end stop is reached (at rest).
- Adjustable angle of rotation** The angle of rotation of the actuator can be changed by clip in 2.5° increments. This is used to set the maximum flow rate of the valve.
- kv setting** Adjustable kv-values (C2..Q- ..) / V̇max-values (C2..QP (T) - ..) are given in the respective zone valve data sheets.

2-way valve: Remove end stop clip and place at desired position.  
3-way valve: Remove end stop clip (change-over application).



**Accessories**

	Description	Type
Mechanical accessories	Spindle extension CQ, for cooling applications only	ZCQ-E
	Housing cover white	ZCQ-W

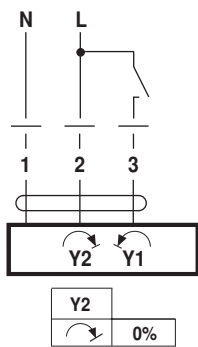
**Electrical installation**



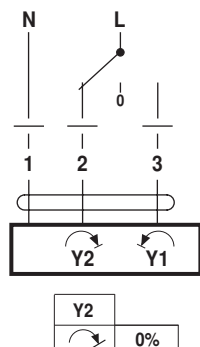
- Notes**
- Caution: Power supply voltage!
  - Parallel connection of other actuators possible. Observe the performance data.

**Wiring diagrams**

AC 230 V, open-close

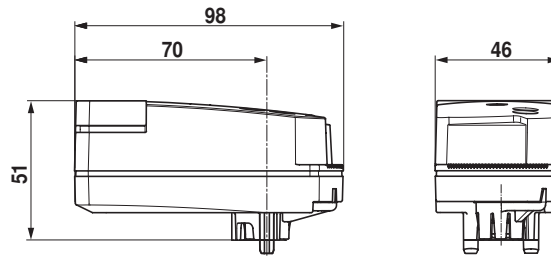


AC 230 V, 3-point



**Installation notes**

- Maintenance** Ball valves and rotary actuators are maintenance-free. In the event of any service work on the final controlling device, it is essential to isolate the rotary actuator from the power supply (by unplugging the electrical cable). Any pumps in the part of the piping system concerned must also be switched off and the appropriate slide valves closed (allow everything to cool down first if necessary and reduce the system pressure to ambient pressure level). The system must not be returned to service until the ball valve and the rotary actuator have been properly reassembled in accordance with the instructions and the pipeline has been refilled in the proper manner.

**Dimensions [mm]****Dimensional drawings****Further documentation**

- Overview Valve-actuator combinations
- Data sheet for zone valves
- Installation instruction for zone valves and actuators
- General notes for project planning